



Create a fun life in Camping





# CONTENTS



Intelligent system of  
mobile house

Y5 Series

Y7Series

N7 Series

N7<sup>+</sup>Series

K9 Series

Z5 Series

Z7 Series

S3 Series

S5 Series

X5 Series

X3 Series

M3 Series

M5 Series



# Intelligent system of mobile house

## Cross-border integration

The system has total solution that is providing intelligent, integrated equipment



## Long-range control

Whole house smart home system, mobile APP can be operated



## Diversified function

A set of systems to solve the hotel communication and intelligent problems, unified management of the background, management is convenient and fast



## Intelligent upgrade

The system has total solution that is providing intelligent, integrated equipment



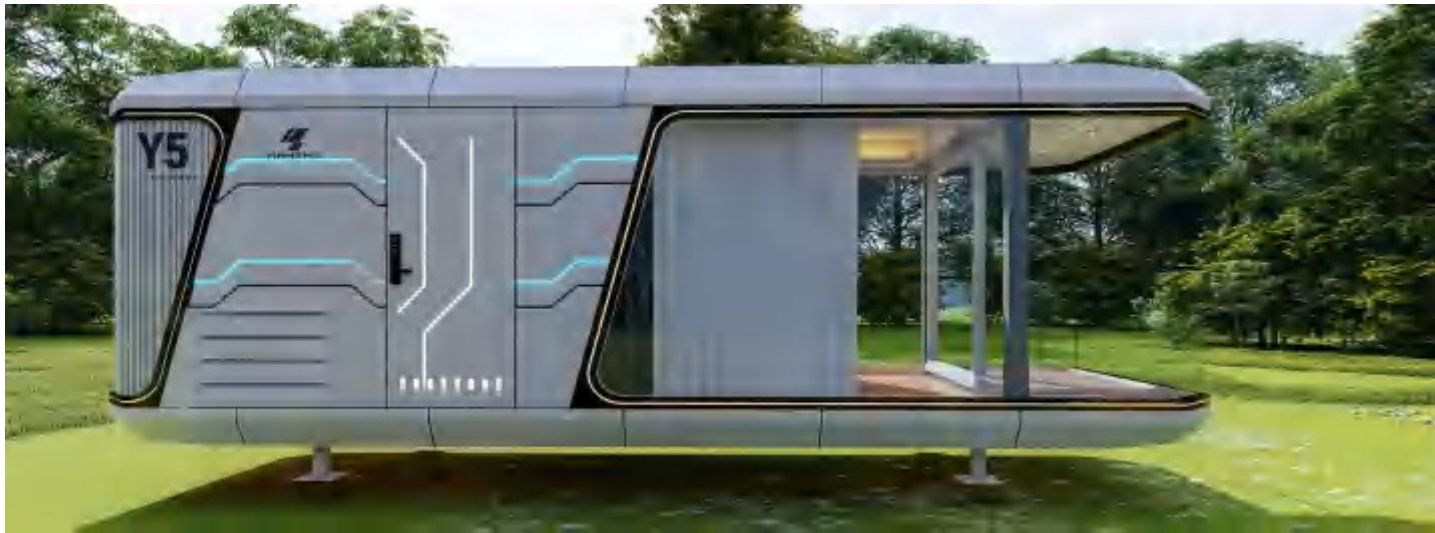
## Accurate data acquisition

Regularly help the hotel intelligently collect all kinds of data, and provide data support for the micro-hotel to continuously optimize the operation mode



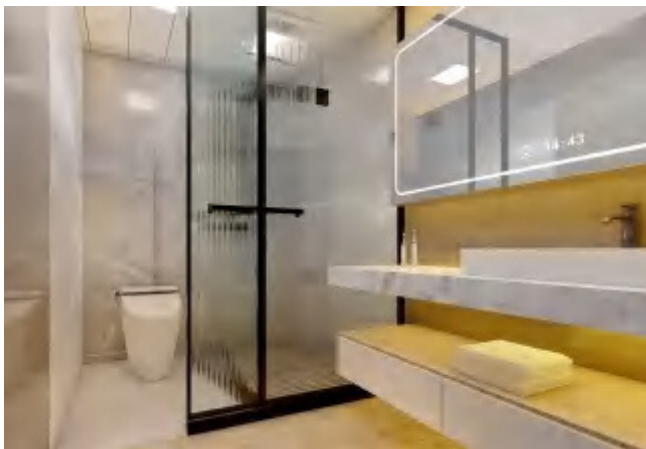


# Space Mobile House Y5 Series



Product Dimension L:8.5m W:3.3m H: 3.2m Building Area 28.05m²

The Space Mobile House Y5 Series combines the senses of future and technology into one fashionable appearance. The whole structure is built with galvanised steel, with an aluminium veneer shell, a design of elegance and grace, a touch-base full smart home system, information and entertainment at a touch equipped with basic living facilities, and a panoramic balcony that is multi-directional, allowing us and nature to "zero distance" interact.



interior



# Space Mobile House Y5 Series



Camping Area



# Space Mobile House Y5 Series



The beach



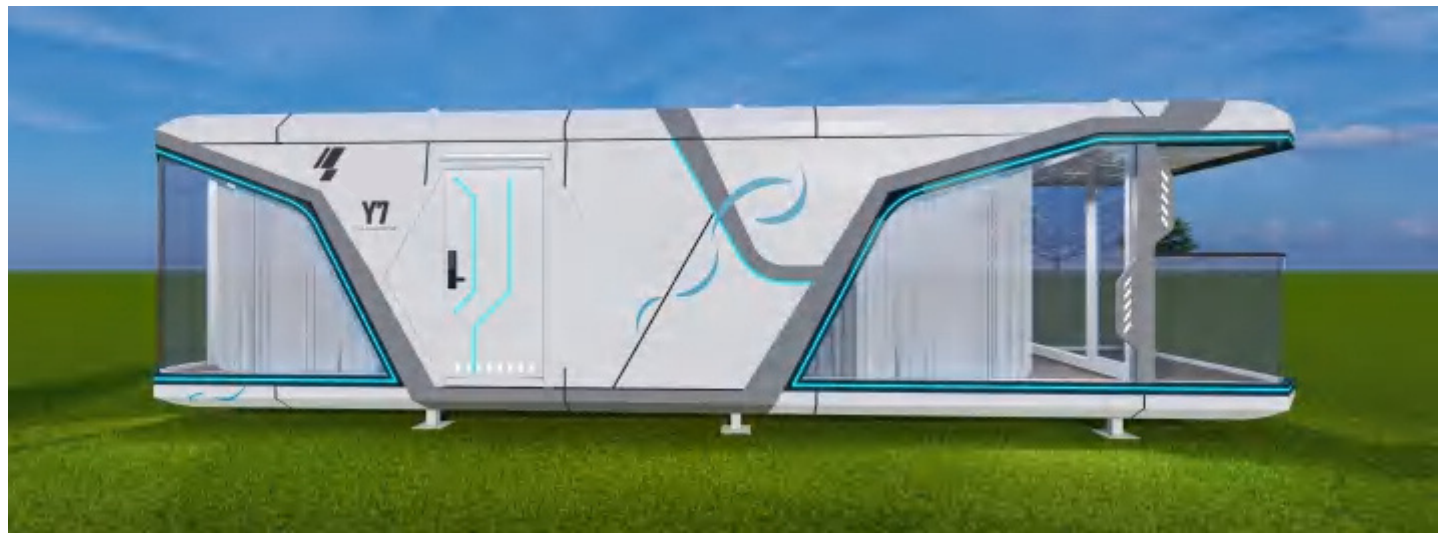
# Space Mobile House Y5 Series



The Forest



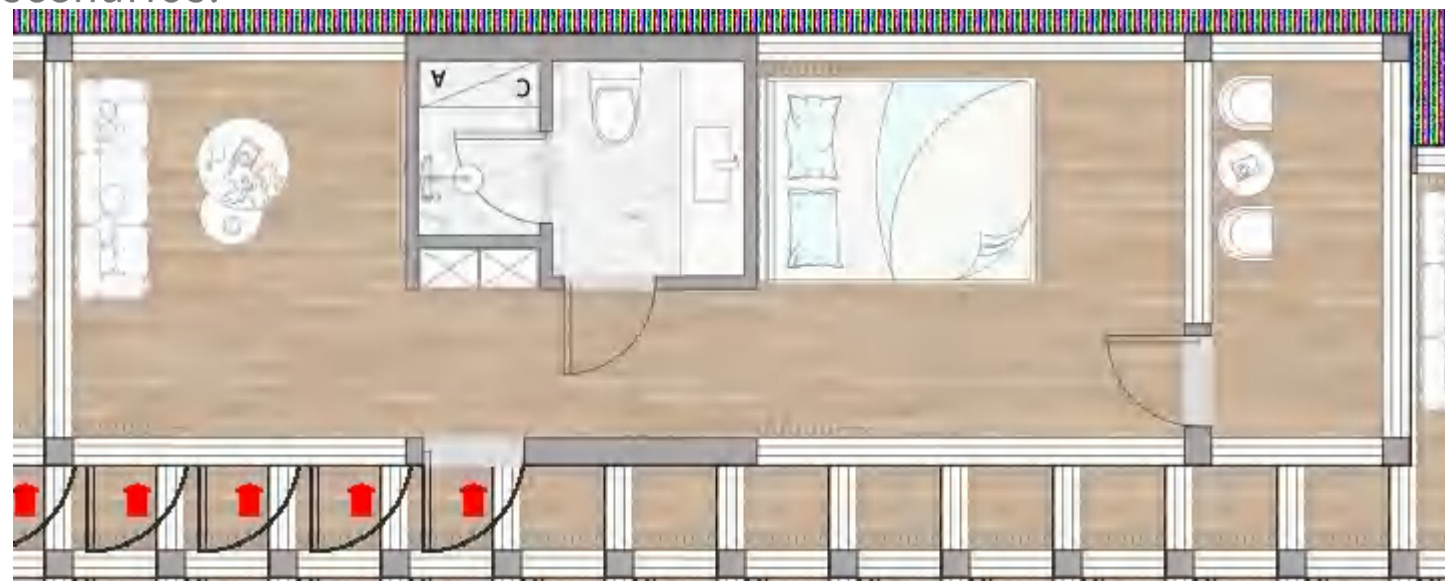
# Space Mobile House Y7 Series



Product Dimension L:11.5m W:3.3m H:3.2m

Building Area 38m<sup>2</sup>

The Space Mobile House Y7 series draws inspiration from the natural world in its design concept. Colour, nature, and appearance can all be successfully combined. The interior space that is more comfortable and relaxing, the use of ecological protection design techniques, the overall frame flow line that is clear and simple, and the arrangement of one room and one lounge before and after have all come together to form the industry's standard model for high-end camping accommodations that can adapt to a variety of scenarios.



interior





# Holiday resort





# Space Mobile House Y7 Series



The homestay on the local tea farm is filled with tea polyphenols, smelling the faint fragrance of tea, and the taste of tea is mostly mixed with bitter or sweet, or strong or light flavor. giving a feeling of a calm life—a life that can't be completely cherished but a life that laughs at the wind and talks lightly.



Tea Farm





# Space Mobile House Y7 Series





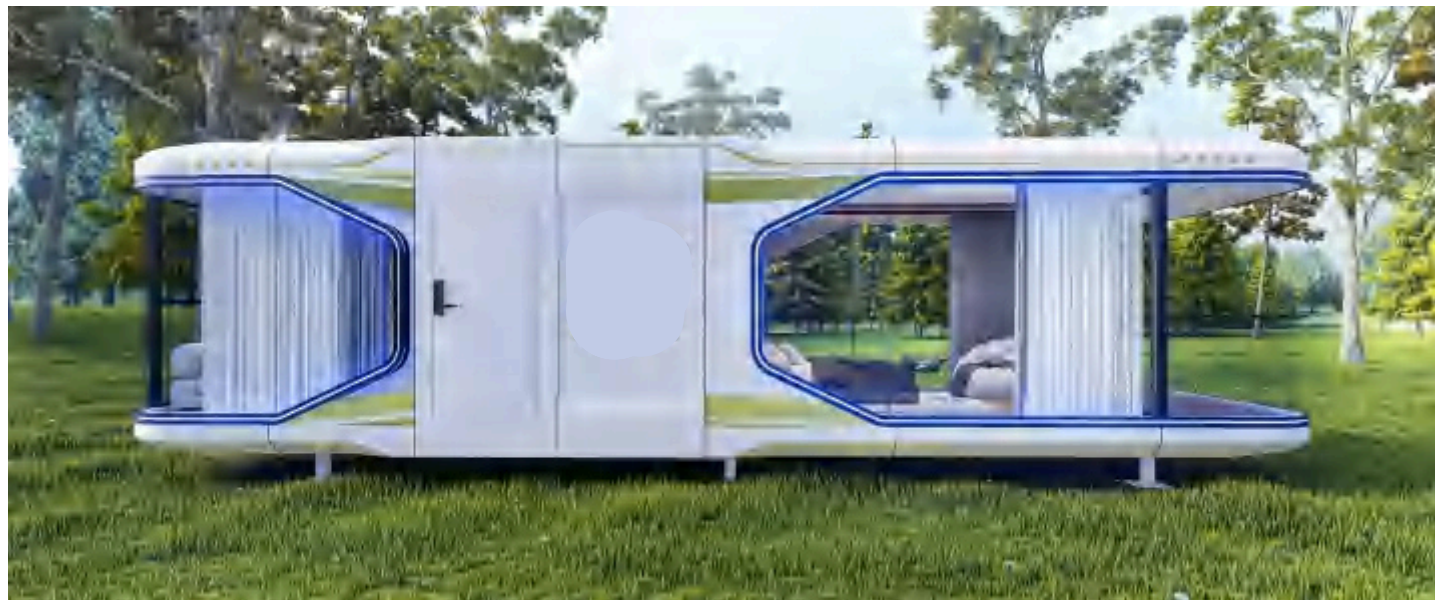
# Space Mobile House Y7 Series



The Lake

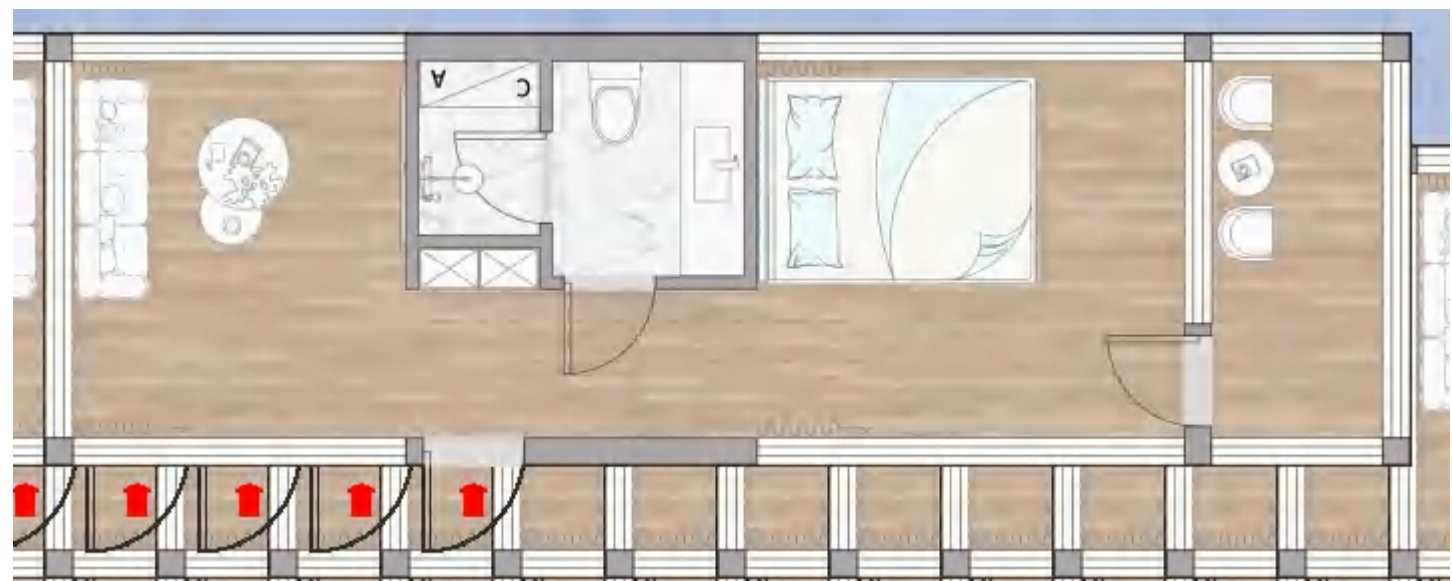


# Space Mobile House N7 Series

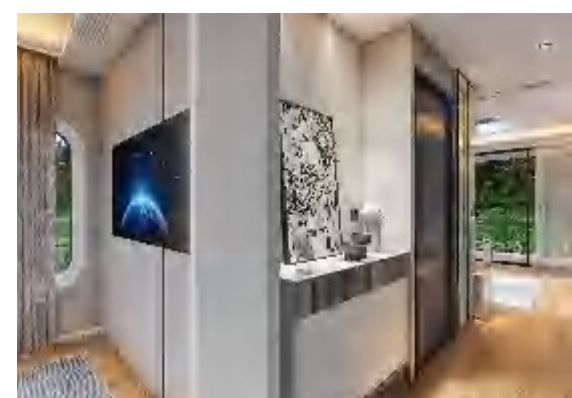
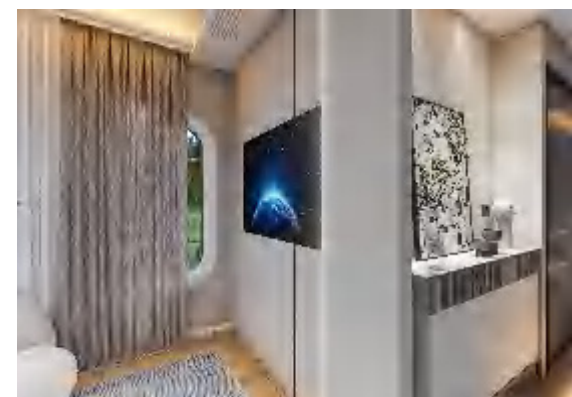


|                   |                       |               |                  |
|-------------------|-----------------------|---------------|------------------|
| Product Dimension | L:11.5m W:3.3m H:3.2m | Building Area | 38m <sup>2</sup> |
|-------------------|-----------------------|---------------|------------------|

The Space Mobile House N7 series, with a galvanised steel structure, an aluminium veneer enclosure of the shell, a simple sci-fi fashion appearance, an intelligent access control check-in system, complete dry and wet separation bathroom living facilities, and a panoramic balcony with a large field of view, allows you to feel the warmth of the family while being in nature.



## interior





# Space Mobile House N7 Series





# Space Mobile House N7 Series





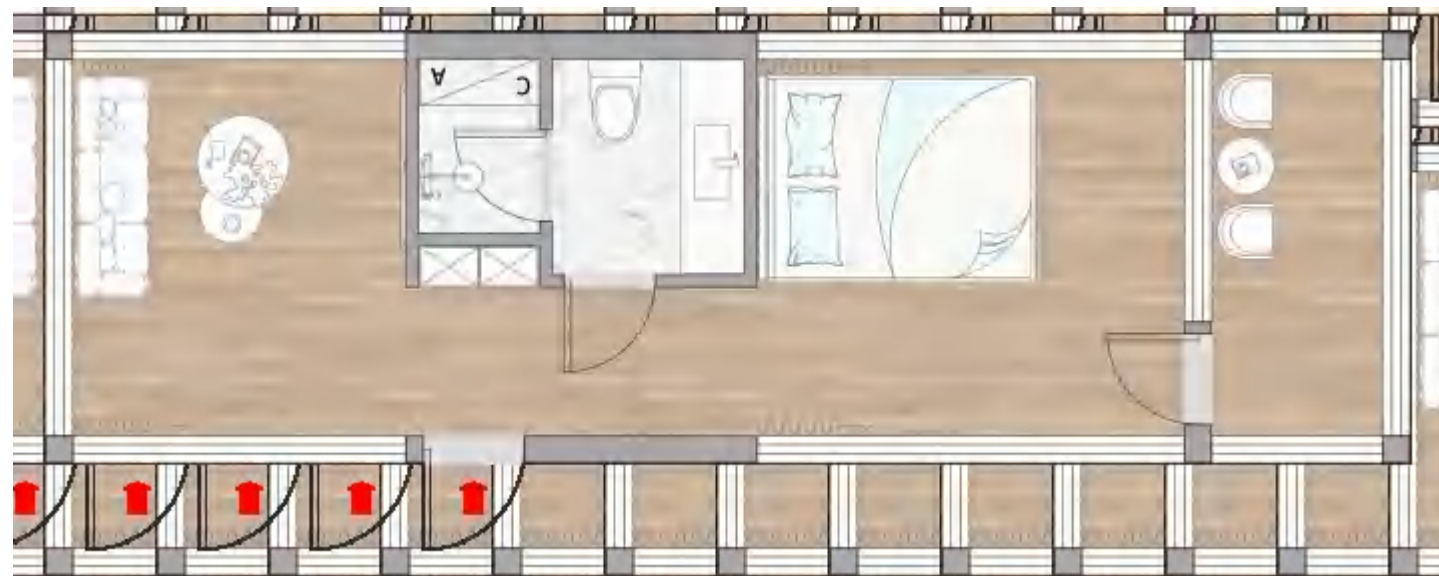
# Space Mobile House N7<sup>+</sup> Series



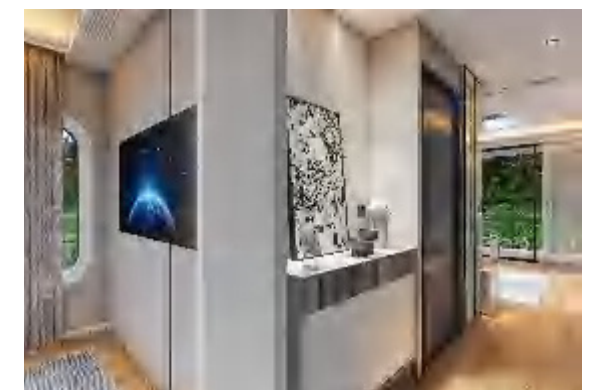
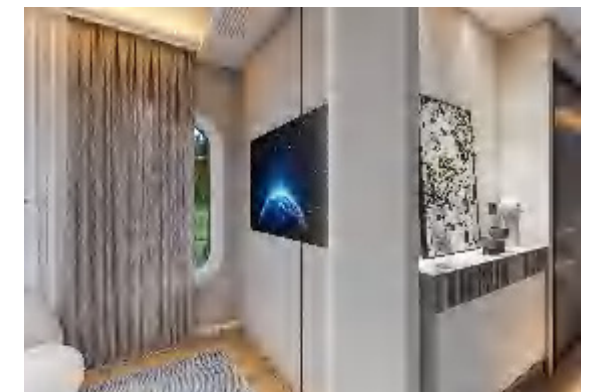
Product Dimension L:11.5m W:3.3m H:3.2m

Building Area 38m<sup>2</sup>

The Space Mobile House N7<sup>+</sup>series, with a galvanised steel structure, an aluminium veneer enclosure of the shell, a simple sci-fi fashion appearance, an intelligent access control check-in system, complete dry and wet separation bathroom living facilities, and a panoramic balcony with a large field of view, allows you to feel the warmth of the family while being in nature.



## interior





# Space Mobile House N7<sup>+</sup> Series





# Space Mobile House N7+ Series





# Space Mobile House N7+ Series





# Space Mobile House K9 Series



Product Dimension L:12.55m W:3.8m H: 3.2m

Building Area 48m<sup>2</sup>

The space capsule K9 series uses hot-dip galvanized square tubes as the entire frame and aviation aluminum plates as the outer shell. It has a simple and elegant appearance, intelligent access control check-in system, dry and wet separated bathrooms; reasonable space division, and large-view floor-to-ceiling windows, allowing the design to integrate into life.



interior



# Space Mobile House K9 Series





# Space Mobile House Z5 Series



Product Dimension L:9.5m W:3.3m H: 3.2m Building Area Approximately 31m<sup>2</sup>

The Space Mobile House Z5 series is constructed entirely of hot-dip galvanised steel with an aluminium veneer shell and incorporates light and shadow into its fashionable appearance. a blend of grace and elegance. touchscreen-based smart home setup. a touch that provides basic living facilities to provide information and entertainment. Super comfort in space, outstanding vision, and unparalleled scalability.



interior





# Space Mobile House Z5 Series





# Space Mobile House Z5 Series





# Space Mobile House Z5 Series





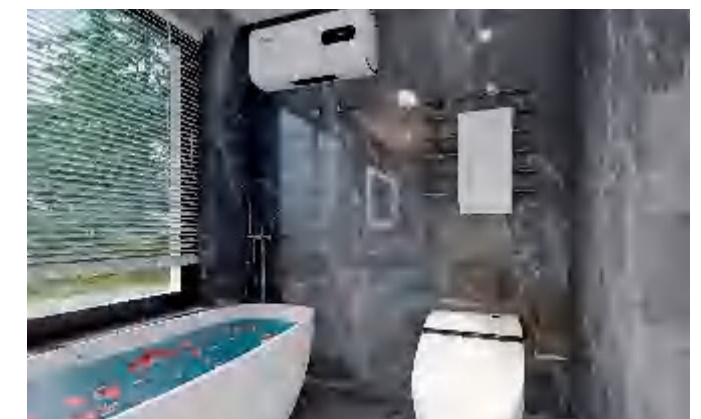
# Space Mobile House Z7 Series



Product Dimension L:11.5m W:3.3m H: 3.2m

Building Area 38m<sup>2</sup>

The Space Mobile House Z7 series is the most "advanced" model; the whole structure is made of hot-dip galvanised steel; the enclosure of the shell has been coated with aluminium veneer; the use of classic black and white two colours to enhance the visual effect; the original smooth curve design is the first step of the domestic high-end prefabricated building; the ultra-high appearance level is favoured by the market flow.





# Space Mobile House Z7 Series



grassland



# Space Mobile House Z7 Series





# Space Mobile House Z7 Series



grassland



# Space Mobile House Z7 Series



Camping Area



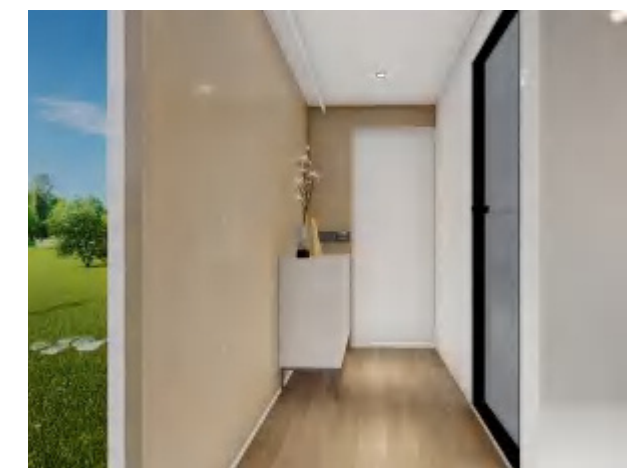
# Space Mobile House S3 Series



Product Dimension L:5.8m W:3.1m H: 3.2m

Building Area 18m<sup>2</sup>

The Space Mobile House S3 series, where the whole structure is made of hot-dip galvanised steel and the enclosure of the shell has been coated with aluminium veneer, Interior designers have added an intelligent access control system and reasonable space division so that the design can come to life. The multi-angle ultra-wide field of view is floor-to-ceiling. Windows create nature, achieve space harmony, make the design worthwhile, and let the details create perfection!



interior



# Space Mobile House S3 Series





# Space Mobile House S3 Series





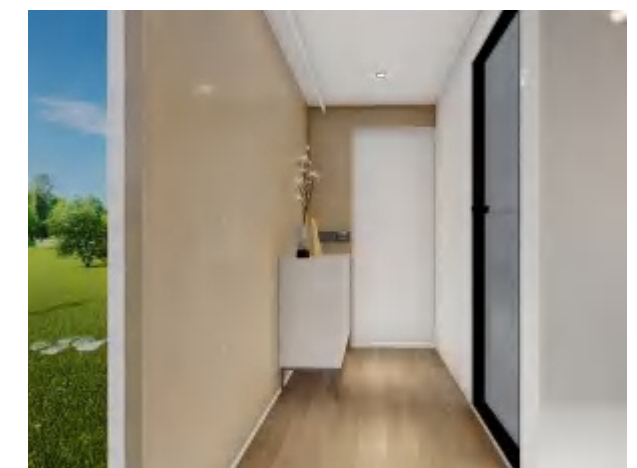
# Space Mobile House S5 Series



Product Dimension L:8.5m W:3.1m H: 3.2m

Building Area 26.35m<sup>2</sup>

The Space Mobile House S5 series features a large view balcony, an elegant and luxurious shape, and a structure composed entirely of hot-dip galvanised steel with an aluminium veneer enclosure around the shell. appropriate division of space, allowing you to always appreciate nature's most exquisite gift. A full smart home system, intelligent adjustment, and visual data display make your travel more comfortable and convenient.



interior

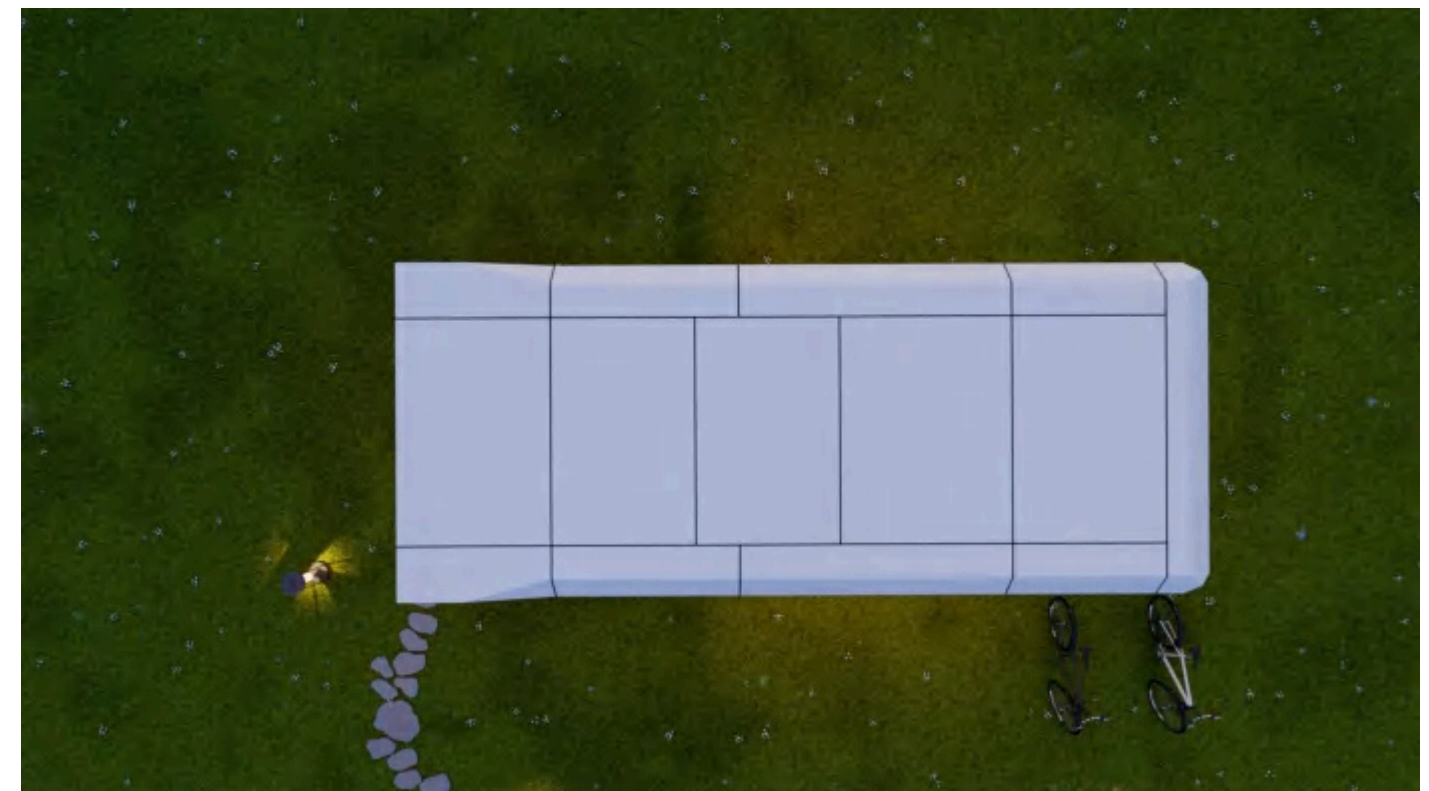


# Space Mobile House S5 Series





# Space Mobile House S5 Series





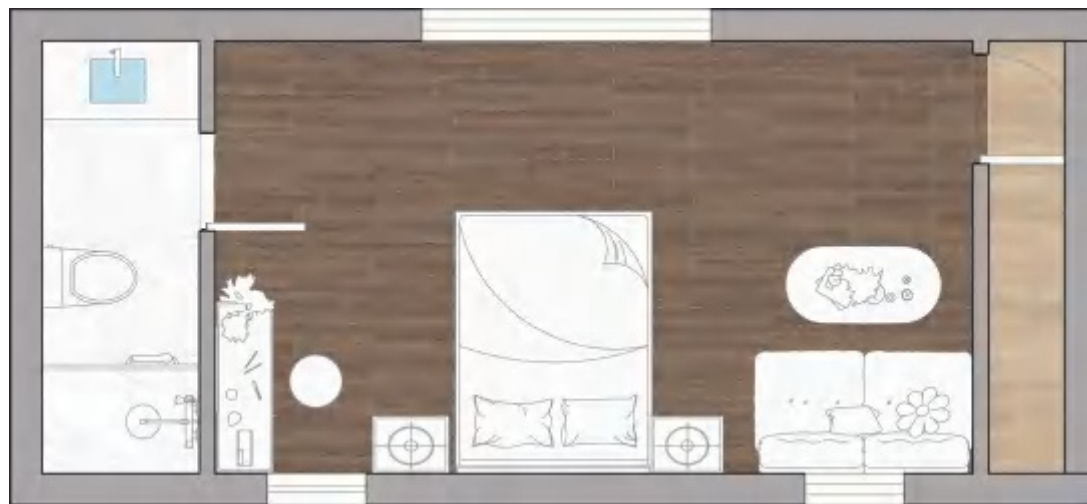
# Mobile house X5 Series



Product Dimension L:7.8m W:3.3m H: 3.2m

Building Area 25.74m<sup>2</sup>

The Mobile house X5 series is lightweight overall because its entire structure is made of hot-dip galvanised steel, and its shell enclosure is coated in an aluminium alloy. There are two options for the roof type: regular sloping or irregular sloping. The roof design has a sense of flow. suitable for outdoor camping, tourist vacations, homestays, etc.





# Mobile house X5 Series





# Mobile house X5 Series





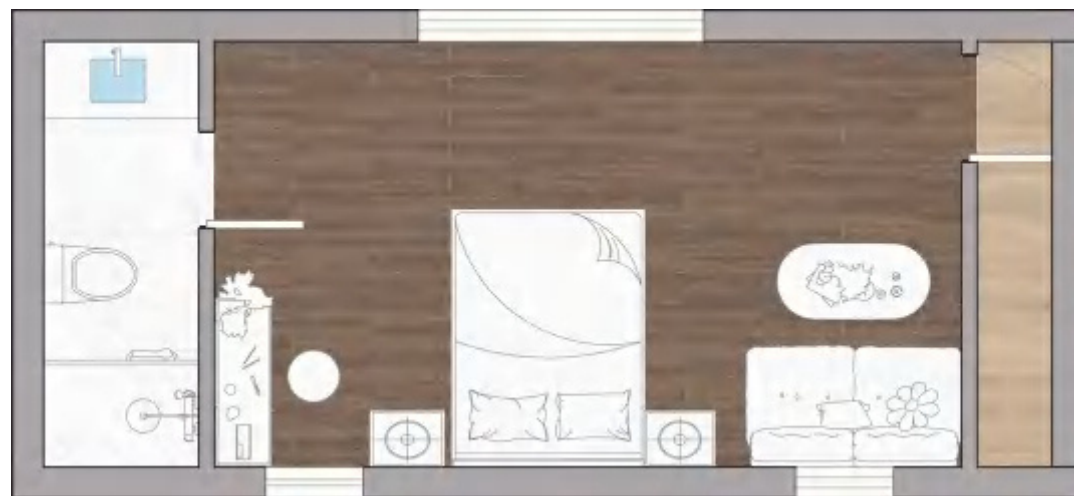
# Mobile house X3 Series



Product Dimension L:6.6m W:3.3m H: 3.2m

Building Area 21.78m<sup>2</sup>

The Mobile house X3 series is lightweight overall because its entire structure is made of hot-dip galvanised steel, and its shell enclosure is coated in an aluminium alloy. There are two options for the roof type: regular sloping or irregular sloping. The roof design has a sense of flow. suitable for outdoor camping, tourist vacations, homestays, etc.





# Mobile house M3 Series



Product Dimension L:6m W:3m H: 3.2m

Building Area 18m<sup>2</sup>

The magnesium aluminium exterior wall of the Mobile house M3 series features metal carved panels, and the interior is covered in durable, lightweight insulation. With its layered and sloping roof design, the roof is incredibly unique. It's the perfect place to stay for an outdoor event because of its lightweight, straightforward construction and overall forest-like, natural design.





# Mobile house M5 Series



Product Dimension L:7.5.3m W:3m H: 3.2m

Building Area 22.5m<sup>2</sup>

The magnesium aluminium exterior wall of the Mobile house M5 series features metal carved panels, and the interior is covered in durable, lightweight insulation. With its layered and sloping roof design, the roof is incredibly unique. It's the perfect place to stay for an outdoor event because of its lightweight, straightforward construction and overall forest-like, natural design.





