

AL-bairam Co.

Contracting and real estate investment



شركة البيرم  
للمقاولات والاستثمار العقاري

## COMPANY PROFILE

- ✉ Info@albaiyram.com
- ✉ alebtihal.ak@gmail.com
- 🌐 www.albaiyram.com
- 📍 Tripoli-Wadi Alrabie
- ☎ +218 92 588 3219



AL-bairam Co.

Contracting and real estate investment



شركة البيرام  
للمقاولات والاستثمار العقاري

## TABLE OF CONTENTS

{1-2}

- Company Introduction
- Our Agency - CGCH

{03}

- Our Accomplishments

{16}

- Albairam Products and Services





## Greetings,

- Albairam Company was established in Libya in 2018 by a group of professional engineers and an executive management team with extensive experience dating back to 2000 in the fields of site preparation and engineering project execution within the prefabricated buildings sector.
- Since our inception, we have focused on delivering integrated solutions in the prefabricated building sector. We have implemented numerous projects across Libya and North Africa, including worker accommodations, administrative buildings, schools, houses, Hotels, and prefabricated villas.
- We don't just build – we also provide complete fit-outs, including furniture, kitchens, safety systems, and fire protection, all according to the highest standards of quality and reliability.

At ALBairam Company, we are delighted to present an overview of our diverse range of services in the Civil and Oil and Gas Sector. We look forward to offering our expertise in various specialized fields to you.



## CGCH EXCLUSIVE AGENCY

**Albairam** proudly represents **CGCH—China Green Container Houses** —as its exclusive agent in Libya and surrounding regions.

**CGCH** is the largest Chinese prefabricated container manufacturing brand and one of the sector's pioneers in prefabricated container housing and modular steel-structure building systems

Through our exclusive partnership with **CGCH**, **Albairam** has the strategic advantage of delivering advanced, ready-to-use modular solutions tailored for **construction, energy, tourism, oil and gas, and public service sectors**. With access to a full range of CGCH's technologies—including expandable units, foldable Z-type modules, and capsule homes—**Albairam** can respond to diverse project demands with **unmatched speed and flexibility**.







# CGCH EXCLUSIVE AGENCY GUANGDONG FACTORY







## CGCH EXCLUSIVE AGENCY GUANGDONG FACTORY







# CGCH EXCLUSIVE AGENCY COMPANY QUALIFICATIONS







# CGCH EXCLUSIVE AGENCY MAJOR PRODUCTS

## FLATBACK CONTAINERS

During the pandemic, Zhonghui participated in the construction of 58 Mobile Cabin hospitals, including Huoshenshan Hospital, Leishenshan Hospital, and the Central Aid Hong Kong Hospital.



Huoshenshan Mobile Cabin Hospital in 2020



Leishenshan Mobile Cabin Hospital in 2020



Hong Kong Hospital Hetao Isolation Mobile Cabin Project



Fujian Xianyou Mobile Cabin Hospital



Jiangxi Yiyang Mobile Cabin Hospital



Xinjiang Isolation Mobile Cabin Hospital



Shaoyang Mobile Cabin Hospital



Fujian Quangang Mobile Cabin Hospital



Leizhou Mobile Cabin Hospital



Isolation Hospital Project



Jiangmen Pengjiang Mobile Cabin Hospital

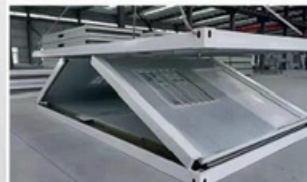
## Z-FOLDING CONTAINERS



### Z-Type Container

Z-type container houses have significant advantages during transportation. After being folded, the height of the container house is only 45 cm, which takes up less space when loading. A 17.5-meter vehicle can easily load 20 containers, greatly reducing transportation costs and improving logistics efficiency.

Z-type container houses feature quick deployment and folding, making them highly flexible and convenient. Whether used as temporary dormitories on construction sites, exhibition display areas, or temporary offices, they can be quickly put into use whenever temporary accommodation or office space is needed.







# CGCH EXCLUSIVE AGENCY MAJOR PRODUCTS

## EXPANDABLE CONTAINERS



### Mobile Medical Stations

These mobile medical stations are located in Texas, USA. The project consists of 70 expandable containers distributed across various cities in Texas. They are flexible and portable, making them easy to move and adapt to different locations and occasions. Additionally, their sustainability and eco-friendly features help reduce reliance on traditional energy sources, lower operational costs, and have a minimal negative impact on the environment.



For personal residence or use as a guesthouse, rental property

1. The interior area can be 27/36/54/72 square meters.
2. The layout can include a bathroom, kitchen, bedroom, rooftop, balcony, etc.
3. Multipurpose use of the space.

## COFFEE CONTAINERS



### Mobile Business Scene Series

Application Scenarios: mobile shop

Scope of application: There are more than 100 products such as various kinds of special food carts, creative containers, merchandise kiosks, commercial exhibition halls and so on.



### Dynamic Business Scene Series

Application Scenarios: coffee shop

Scope of application: More than 40 urban space products with both landscape and functionality.

## OUR ACCOMPLISHMENTS

### 2019

- Preparation of the administration building for Ahdaf Company
- Construction of a student dormitory building in Burkina

### 2022

- Preparation of a workers' accommodation site (Brega) for Al-Jabal Oil Services Company
- Preparation of a workers' accommodation site (ERWIN) for Petrofac Company

### 2023

- Preparation of a rig camp for Al-Nile Al-Araby Company
- Preparation of Dafah Field camp for Al-Jabal Oil Services Company
- Preparation of NC115 Field for Al-Jabal Oil Services Company



## OUR ACCOMPLISHMENTS

---

### 2024

- Preparation of a rig camp for Al-Nile Al-Araby Company
- Preparation of a rig camp for Al-Mustakshif Company
- Preparation of the Salah Al-Din site and archive building for Isharat Al-Tatawwur Company
- Preparation of a rig camp for Al-Bariq Oil Services Company
- Provision of mobile bathroom units for the Ministry of Defense

---

### 2025

- Construction of a modular Hotel / Chalet for a site.
- Preperation for Storage to Alraqi for medical equipment
- Construction of VIP Office Containers to Mutahidah Company
- Construction and delivery for Prefab Toilets to Al-usool Almunirah Company

# ERWIN OIL FIELD CAMP



# ERWIN OIL FIELD CAMP





# ERWIN OIL FIELD CAMP





## ERWIN OIL FIELD CAMP



# ERWIN OIL FIELD CAMP





## ERWIN OIL FIELD CAMP



# ERWIN OIL FIELD CAMP





# ERWIN OIL FIELD CAMP



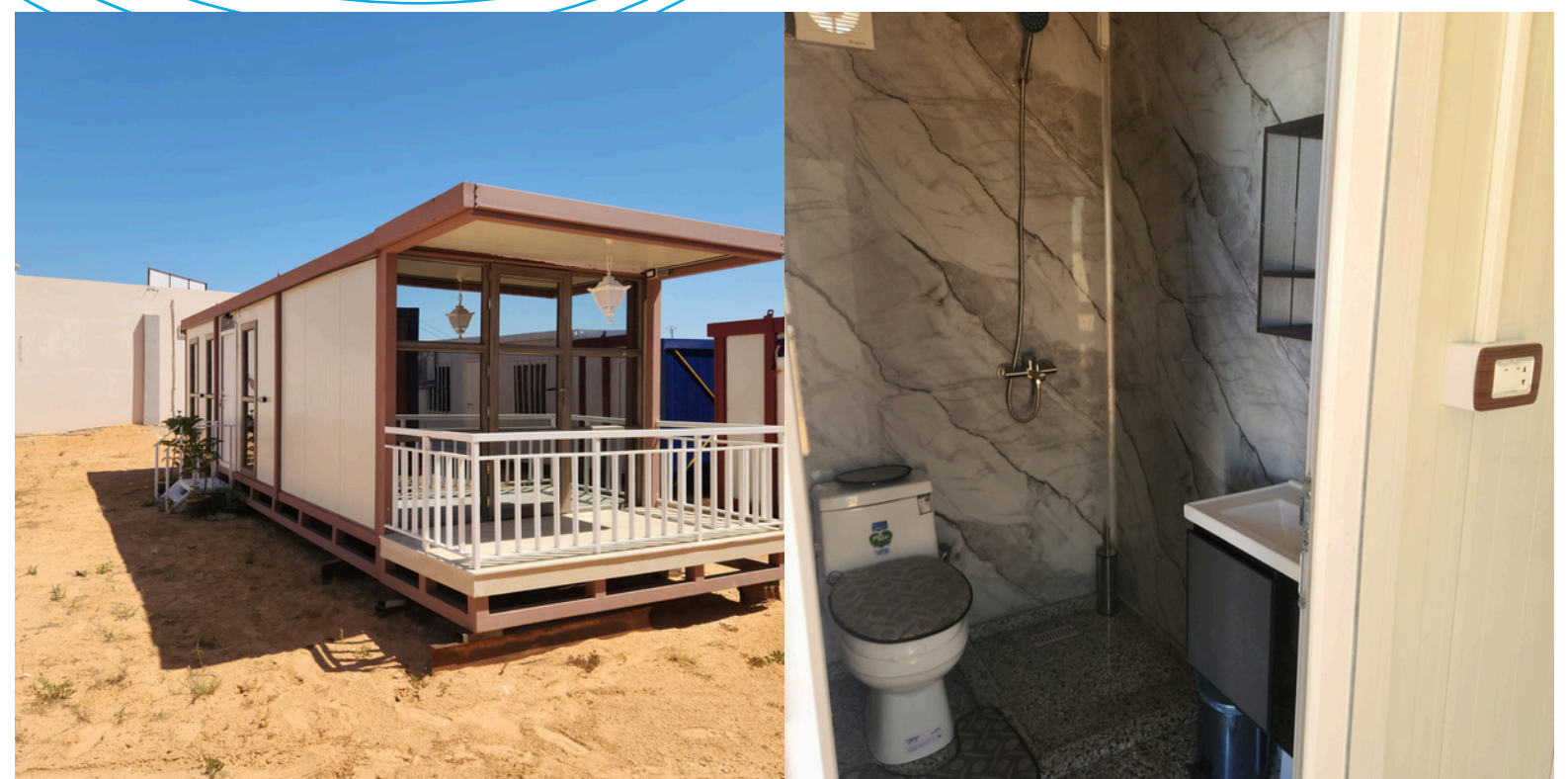
# ERWIN OIL FIELD CAMP





# ERWIN OIL FIELD CAMP











## RIG CAMP FOR ALNILE AL ARABY MISLA OIL RIG







## RIG CAMP FOR ALNILE AL ARABY MISLA OIL RIG













## CAMP FOR AL- MUSTAKSHIF COMPANY





## CAMP FOR AL- MUSTAKSHIF COMPANY



## SALAH AL-DIN SITE AND PASSAPORTARCHIVE BUILDING





## CAMP FOR AL-BARIQ



## CAMP FOR AL-BARIQ





## BATHROOM UNITS FOR THE MINISTRY OF DEFENSE







## RIG CAMP FOR ALNILE AL ARABY JALO OIL RIG



**RIG CAMP FOR ALNILE AL ARABY  
JALO OIL RIG**





## RIG CAMP FOR ALNILE AL ARABY JALO OIL RIG



## RIG CAMP FOR ALNILE AL ARABY JALO OIL RIG

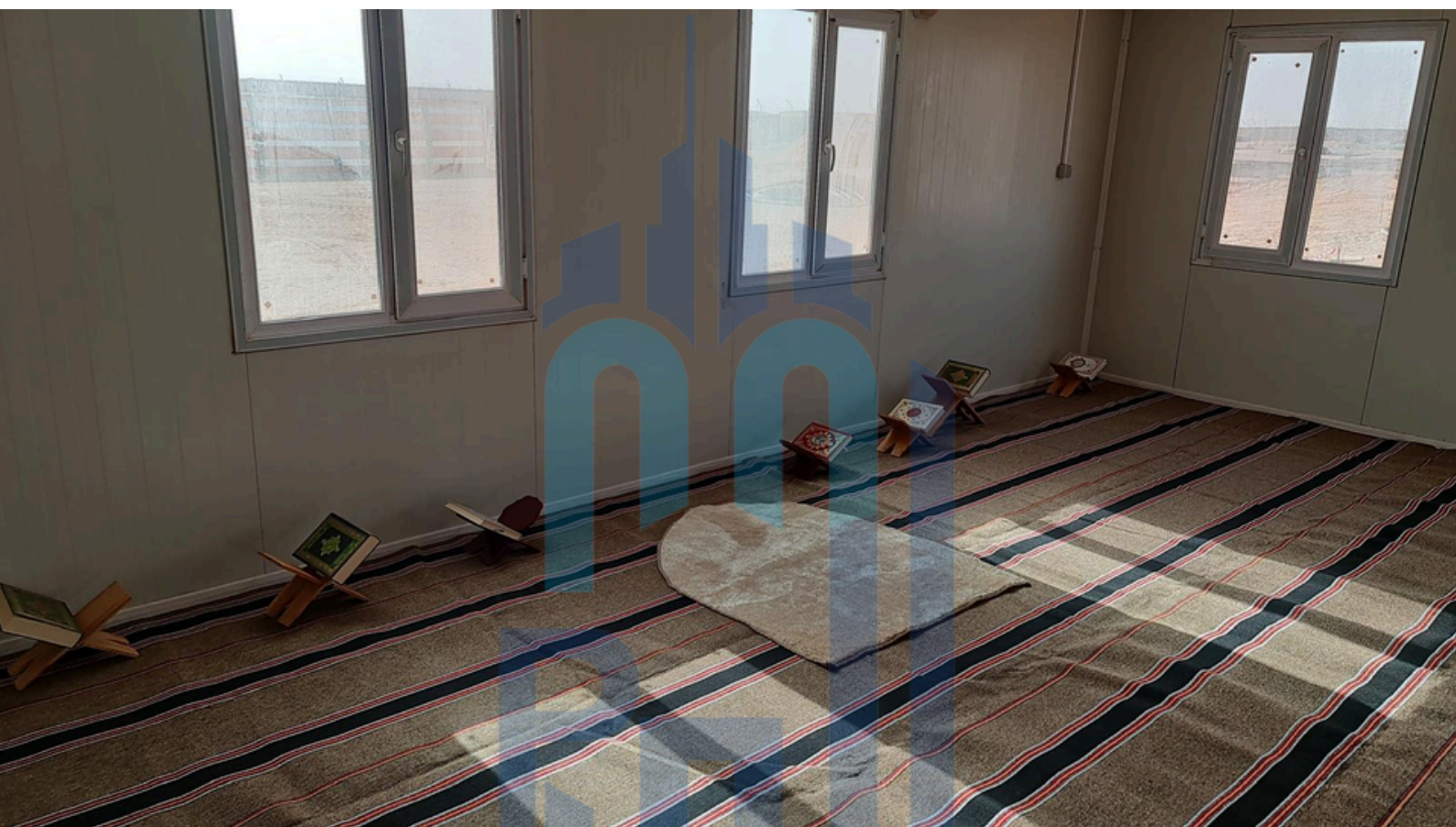








## RIG CAMP FOR ALNILE AL ARABY JALO OIL RIG





# DAFAH OIL FIELD CAMP



# DAFAH OIL FIELD CAMP





# DAFAH OIL FIELD CAMP



# DAFAH OIL FIELD CAMP





## DAFAH OIL FIELD CAMP



# DAFAH OIL FIELD CAMP

























## WORKERS ACCOMMODATION SITE (BREGA)





## WORKERS ACCOMMODATION SITE (BREGA)



**WORKERS  
ACCOMMODATION  
SITE (BREGA)**





## WORKERS ACCOMMODATION SITE (BREGA)





## WORKERS ACCOMMODATION SITE (BREGA)

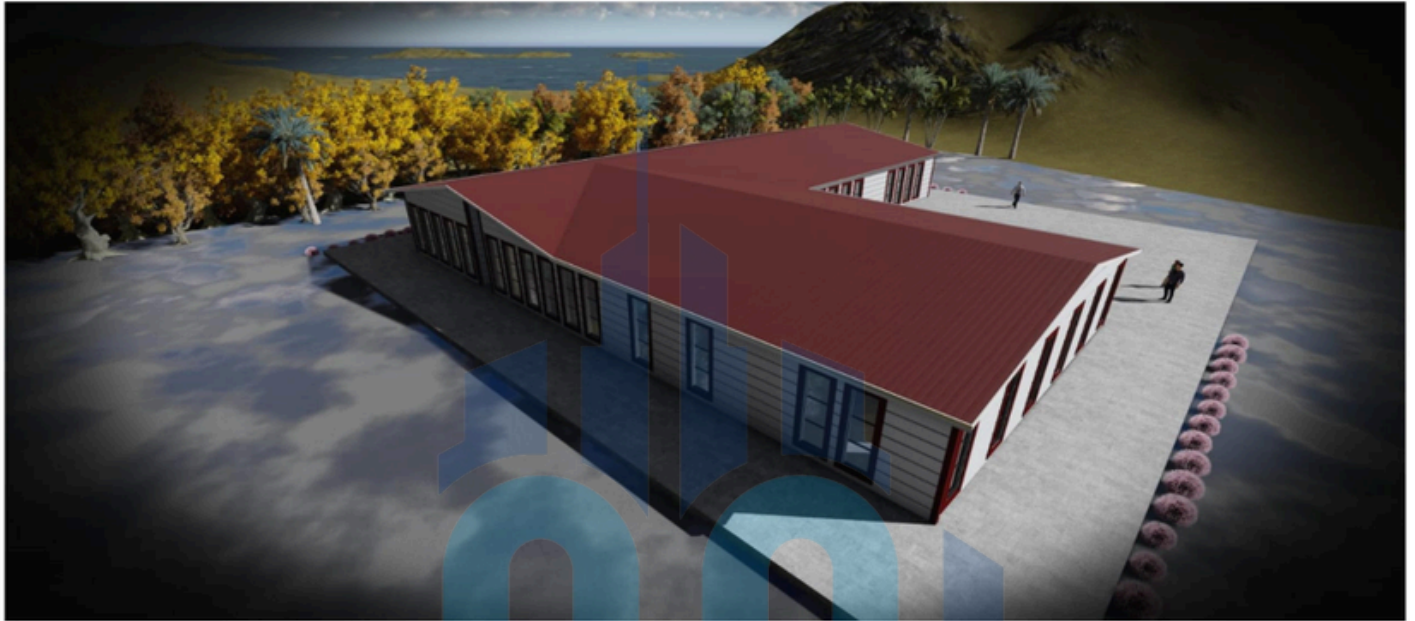




## ADMINISTRATION BUILDING FOR AHDAF



# STUDENT DORMITORY BUILDING IN BURKINA



## DORMITORY BUILDING PROJECT

BURKINA FASO

**Application:** Pregabricated Houses  
**Place:** Ouagadougou Capital of Burkina Faso  
**Area (m<sup>2</sup>):** 750 m<sup>2</sup>  
**Delivery time:** 2.5 months



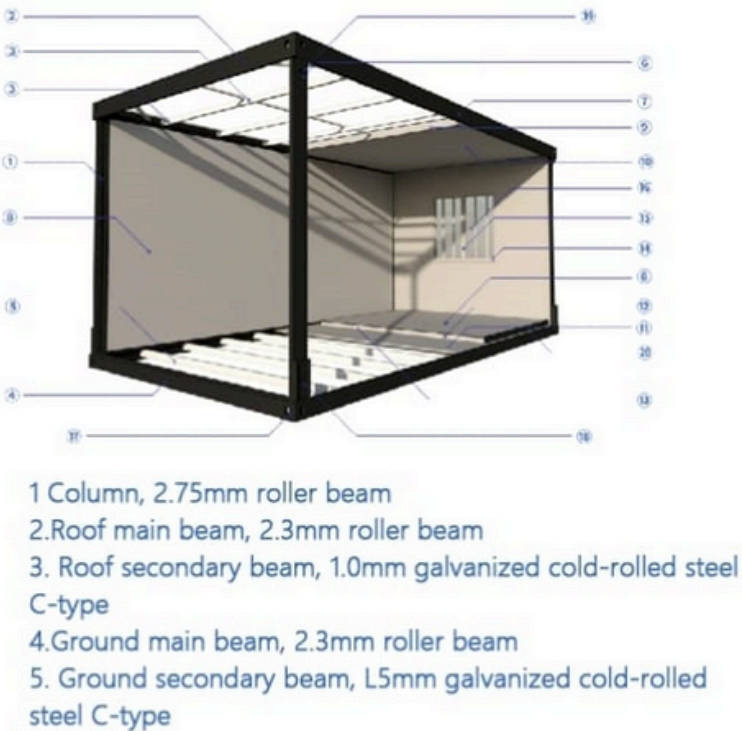
## DORMITORY BUILDING PROJECT

BURKINA FASO



# ALBAIRAM SERVICES & PRODUCTS

## Product parameter

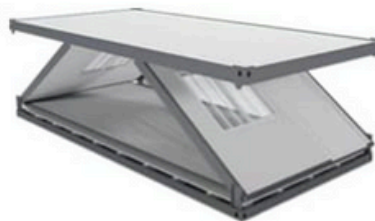


- 6. Bolt, Grade 8.8 high-strength bolt
- 7. Paint, electrostatic spraying plastic powder baking paint
- 8.Roof panel, t=0.45mm thick aluminum zinc coated color steel plate
- 9. Insulation cotton, 50mm glass wool felt
- 10. Suspended ceiling board, 0.3mm thick color steel plate suspended ceiling
- 11.Base plate, 18mm fireproof glass magnesium plate
- 12. Thickness, 50mm thick color steel rock wool sandwich board
- 13. Insulation, 0.3mm aluminum zinc coated color steel plate
- 14.Specification 950mm \* 1100mm
- 15.Frame material, plastic steel
- 16.Single layer glass
- 17.Bottom frame corner piece
- 18. Outer shaft
- 19.Top fastener
- 20. Hinge ear of side panel wall

## Installation



①



②



③

# ALBAIRAM SERVICES & PRODUCTS



## Portable toilet دورة مياه متنقلة



Details	Material	RP's color steel composite board
	HC CODE	HC000000
	Size	outer (2011*1182*2100mm) inner (2011*970*1900mm)
	Color available	Blue/White/Camouflage
Standard Accessories	Weight	100 KG
	Ceramic seated toilet pan	Optional Accessories
	waste tank (110L)	soap dispenser
	non-slip floor	lifting rings
Optional Accessories	gwc washing basin	air freshener dispenser
	water tap	urinal (men)
	ventilation pipe (can pipe)	shower
	lock	hook
Optional Accessories	flushing tank	bed bulk
	switch	paper roller
		bed (women)
		Ceramic seated toilet pan
Optional Accessories		Camouflage color
	40HQ	45 units
	45 units	20 units
	volume	3.2 cubic meters in whole, 1.2 cubic meter in disassembly
Optional Accessories	Environment protection	1. Can be transported overall, thus can be recycled to service different projects without reconstruction.
	User friendly configuration	2. Built as outdoor wedding scenes, marathon events, convention centers, commercial areas, tourist attractions, railway stations, construction sites, etc.
	a wide range of use	3. Built as outdoor wedding scenes, marathon events, convention centers, commercial areas, tourist attractions, railway stations, construction sites, etc.
	Integrated function	4. Integrated with solar & wind power & flushing system etc.
Optional Accessories	Very easy to move	5. 2 workers can hold one unit and move.
	Easy to assemble	6. 2 workers can build 20 set per day.

albairamm@gmail.com  
 www.alebtihal-prefab.com  
 www.alebtihalak.com  
 Tripoli-Ain Zara  
 +218 92 588 3219



# ALBAIRAM SERVICES & PRODUCTS



Preparing companies' work sites

تجهيز مواقع الشركات



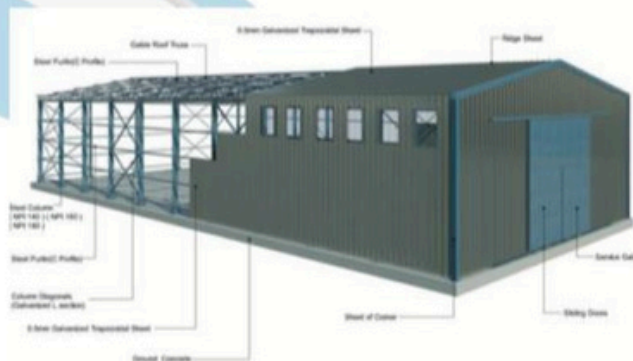
- ✉ albairamm@gmail.com
- 🌐 [www.aletihal-prefab.com](http://www.aletihal-prefab.com)
- 🌐 [www.aletihalak.com](http://www.aletihalak.com)
- 📍 Tripoli-Ain Zara
- ☎ +218 92 588 3219

# ALBAIRAM SERVICES & PRODUCTS



Preparing companies' work sites

تجهيز مواقع الشركات



✉ albairamm@gmail.com  
🌐 www.alebtihal-prefab.com  
🌐 www.alebtihalak.com  
📍 Tripoli-Ain Zara  
☎ +218 92 588 3219





شركة البيرم

للمقاولات والاستثمار العقاري

**Al-Bayram Co.**

Contracting and real estate investment

